

Date: _____ For: File Resubmit
 PO No.: _____ Approval Other _____
 Architect: _____ GC: _____
 Engr: _____ Mech: _____
 Rep: _____
 (Company) _____ (Project Manager) _____



LH247HV
 Single Zone High Static Duct
 Outdoor Unit (ODU) - LUU247 Indoor Unit (IDU) - LHN247HV



Performance:

Cooling:

Capacity (Btu/h)	24,000
SEER	17.0
EER	12.0

SEER - Seasonal Energy Efficiency Ratio EER - Energy Efficiency Ratio

Heating:

Capacity (Btu/h)	27,000
HSPF	10.0

HSPF - Heating Seasonal Performance Factor

Cooling Nominal Test Conditions: Heating Nominal Test Conditions:
 Indoor: 80°F DB/67°F WB Indoor: 70°F DB/60°F WB
 Outdoor: 95°F DB/75°F WB Outdoor: 47°F DB/43°F WB

Electrical:

Power Supply (V ¹ /Hz/Ø)	208-230/60/1
MOP (A)	30
MCA (A)	18.1
Cooling Rated Amps (A)	15.1
Heating Rated Amps (A)	15.1
Compressor (A)	13.5
Fan Motor (A)	0.6
Cooling Power Input (kW)	2.00
Heating Power Input (kW)	2.28

MOP - Maximum Overcurrent Protection MCA - Minimum Circuit Ampacity

Piping:

Liquid Line (in, OD)	3/8
Vapor Line (in, OD)	5/8
Additional Refrigerant (oz/ft)	0.43
Max Pipe Length (ft) ²	164
Pipe Length (no add'l Refrigerant, ft)	25
Max Elevation (ft)	98

Features:

- ESP control
- Hot start
- Inverter (variable speed fan)
- Internal condensate pump
- Auto restart
- Control lock function
- Group control
- Timer (on/off)
- Sleep mode

Included Accessories:

- Simple Controller with Mode (White) - PQRCVCLOQW

Optional Accessories (sold separately)

- LG Programmable Controller - PREMTB10U
- Dry Contact Unit Dry Contact Unit (1 contact, 24 VAC external power) - PQDSB1
- AC Ez - PQCSZ250S0

Operating Range:

Outdoor Unit:

Cooling (°F DB)	5-118
Heating (°F WB)	0-64

Indoor Unit:

Cooling (°F WB)	57-77
IDU Heating (°F DB)	59-81

Unit Data:

Refrigerant Type	R410A
Refrigerant Control	EEV
Refrigerant Charge (lbs)	4.4
ODU Sound Pressure Max (Cool/Heat) ±3 dB(A) ³	48/52
IDU Sound Pressure (H/M/L) ±3 dB(A) ³	38/36/35
ODU Net Weight (lbs)	133
ODU Shipping Weight (lbs)	146
IDU Net Weight (lbs)	73
IDU Shipping Weight (lbs)	95

Fan:

ODU Type	Propeller
IDU Type	Sirocco
Fan Speeds (Fan/Cooling/Heating)	3/3/3
Fan Quantity (ODU + IDU)	1 + 1
Motor/Drive	Brushless Digitally Controlled/Direct
ODU Air Circulation (CFM)	2048
IDU Air Circulation H/M/L (CFM)	688/618/530
Max External Static Pressure (in wg)	0.39
Dehumidification Rate (pts/hr)	7.0

Notes:

1. Acceptable operating voltage: 187V-253V.
2. Piping lengths are equivalent.
3. Sound Pressure levels are tested in an anechoic chamber under ISO Standard 1996.
4. All communication/power cable to be minimum 18 American wire gauge (AWG), 4-conductor, stranded, shielded and must comply with applicable local and national code.
5. See Engineering Manual for sensible and latent capacities.
6. Power wiring cable size must comply with the applicable local and national code.
7. The indoor unit comes with a dry helium charge.
8. This data is rated 0 ft above sea level, with 25 ft of refrigerant line and a 0 ft level difference between outdoor and indoor units.
9. Must follow installation instructions in the applicable LG installation manual.



Outdoor Unit (ODU) - LUU247HV

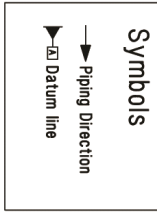
Single Zone High Static Duct



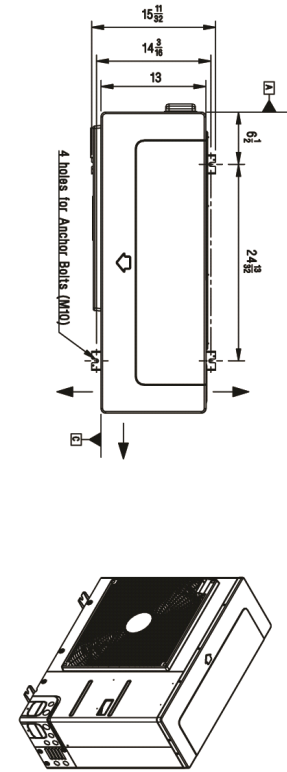
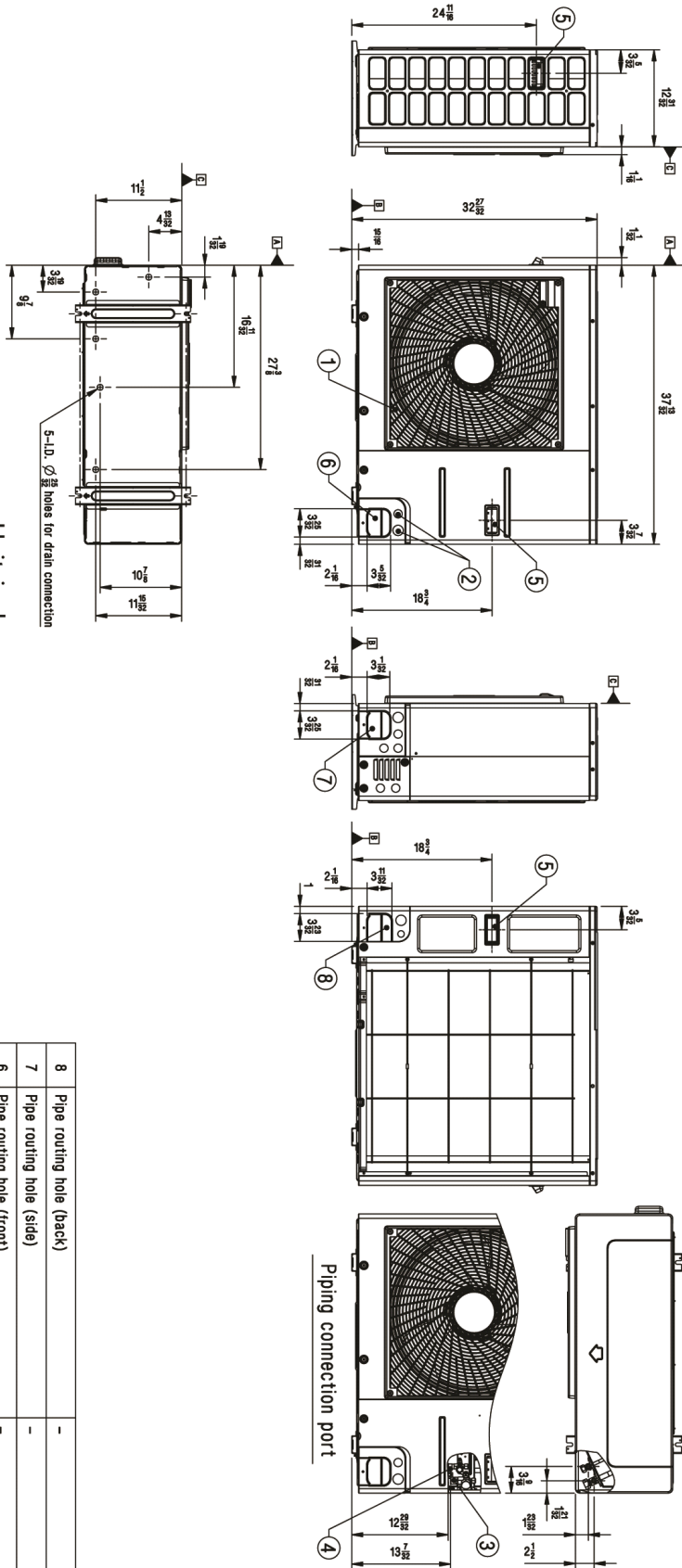
Tag #:

Date:

PO No.:



Unit: inch



No.	Part Name	Description
8	Pipe routing hole (back)	-
7	Pipe routing hole (side)	-
6	Pipe routing hole (front)	-
5	Handle	-
4	Liquid Pipe Connection	Flare joint
3	Gas Pipe Connection	Flare joint
2	Power and communication cable Hole	-
1	Air Outlet	-

Indoor Unit (IDU) - LHN247HV

Single Zone High Static Duct

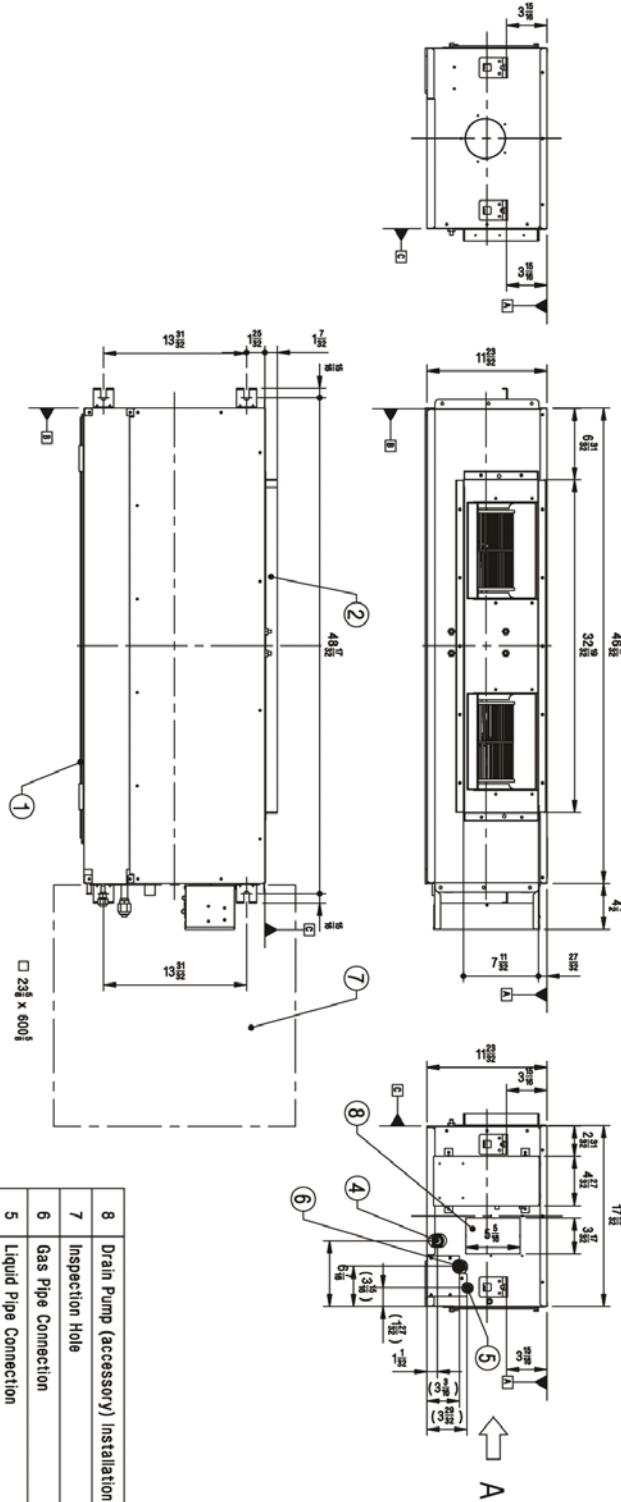
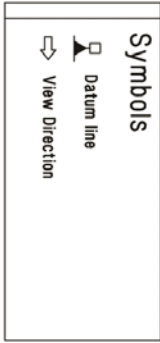


Tag #:

Date:

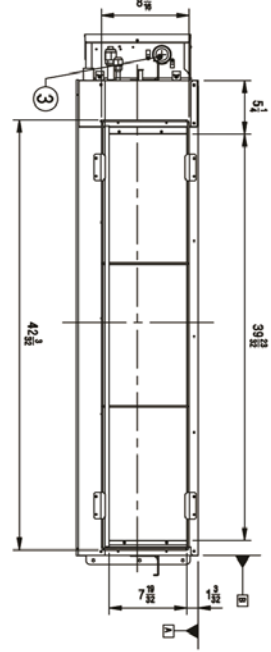
PO No.:

[Unit: inch]



View A

3D VIEW



No.	Part Name	Description
8	Drain Pump (accessory) Installation Hole	Knock out Type
7	Inspection Hole	-
6	Gas Pipe Connection	-
5	Liquid Pipe Connection	-
4	Drain Pipe Connection	-
3	Power and Communication cable & Wired Remote Controller Wire Routing Hole	-
2	Air Outlet	-
1	Air Intake	-